

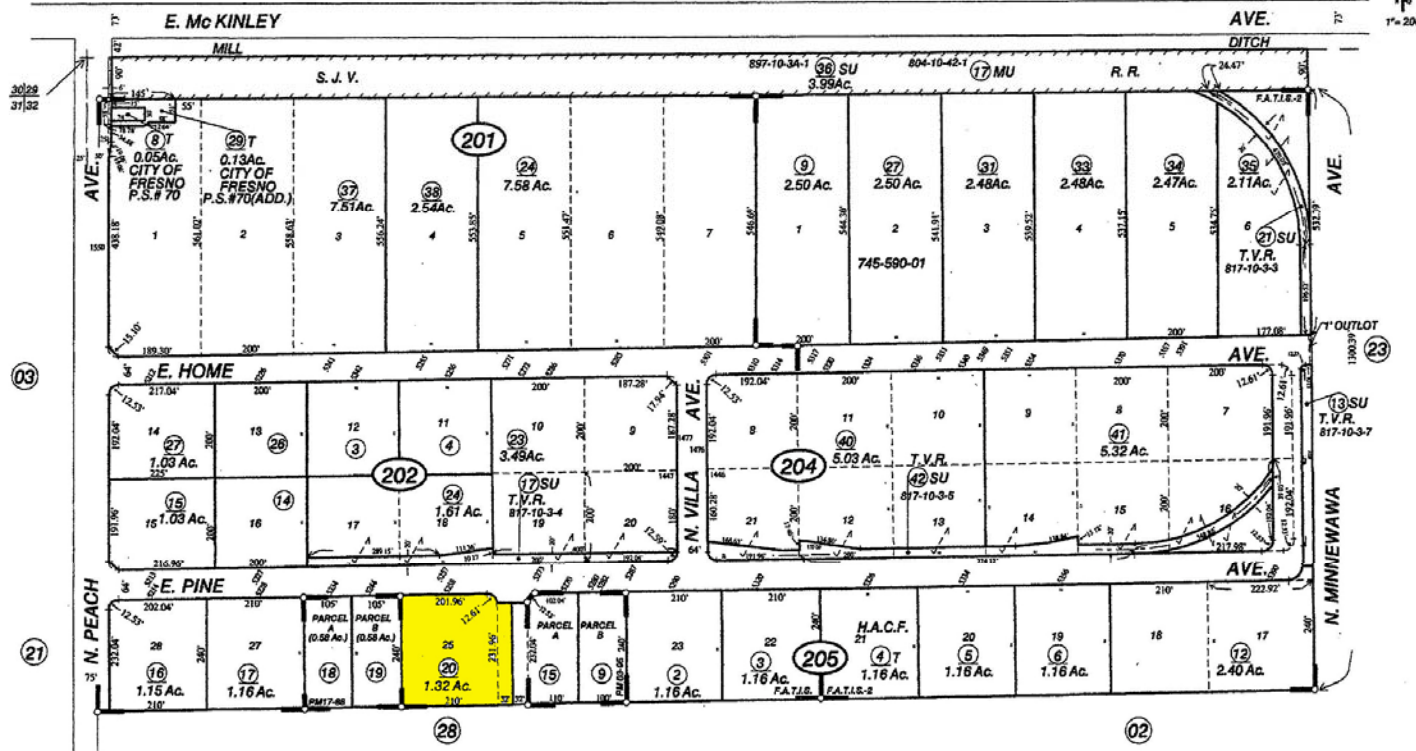
SUBDIVIDED LAND IN POR. SEC. 32, T.13S.,R.21E.,M.D.B.& M.

Tax Rate Area
5-001
5-074

455-20

Bk
494

--- NOTE ---
This map is for Assessment purposes only.
It is not to be construed as portraying
legal ownership or divisions of land for
purposes of zoning or subdivision law.



Fresno Air Terminal Industrial Sites, Tract No. 2061-Plat Bk.22, Pg.70
Fresno Air Terminal Industrial Sites No. 2, Tract No. 2122-Plat Bk.23, Pg.43
Parcel Map No. 72-57 - Bk. 3, Pg.95
Parcel Map No. 75-14 - Bk.17, Pg.88

Assessor's Map Bk. 455 - Pg. 20
County of Fresno, Calif. MAR 3 0 2005

NOTE - Assessor's Block Numbers Shown in Ellipses.
Assessor's Parcel Numbers Shown in Circles.



Dave Tanner
209-758-3108
dtanner@prucommercialre.com
Lic. #00418278

www.TheCommercialConnection.com



5258 E. Pine Ave.,
Fresno, CA 93727

APN: 455-205-20