

M-1 ZONED LOTS

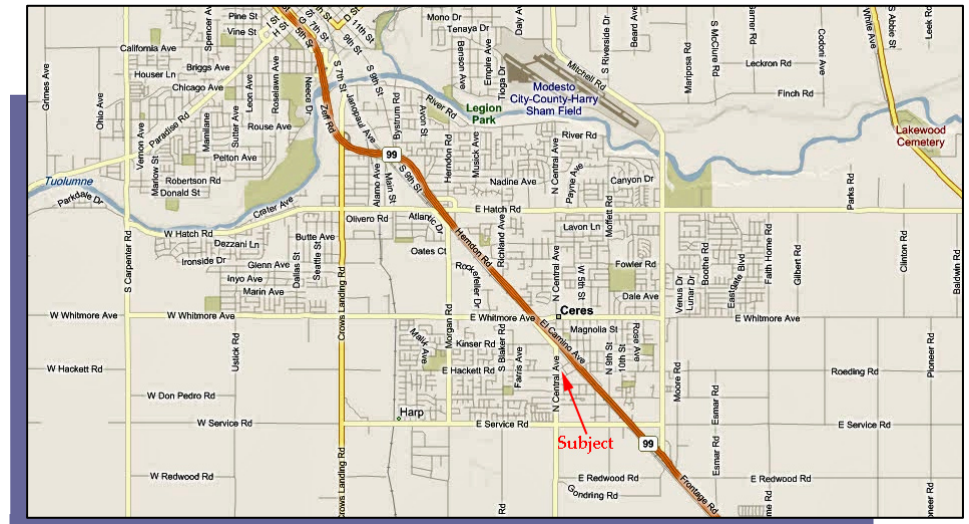
FOR SALE



- Zoned M-1 Light Industrial which allows for a wide variety of uses including auto repair.
- Four separate parcels totaling 1.07 acres.
- Parcel 127-027-034 is +/- .16 acres or +/- 6,969 square feet.
- Parcel 127-027-035 is +/- .21 acres or +/- 9,148 square feet.
- Parcel 127-027-042 is +/- .30 acres or +/- 13,068 square feet.
- Parcel 127-027-043 is +/- .40 acres or +/- 17,424 square feet.
- Public sewer and water available in the area.
- Priced at \$210,000 which is approximately \$4.50 per square foot.

Located within the block surrounded by Pine Street, Harold Ave., Central Ave. and Hackett Ave. Pine Street goes over SR 99 Freeway and provides easy access to the freeway via El Camino Ave. and the Whitmore Ave. on and off ramps.

Note: Parcel outlines in the above aerial photo are approximate.



1101 Sylvan Ave., Suite A25
 Modesto, CA 95350
 209-529-9610 209-521-4289 (fax)
 License #01460663

An Independently Owned and Operated Member of The Prudential Real Estate Affiliates, Inc.

<p>Tony Suleiman 209-758-3467 tsuleiman@prucommercialre.com Lic. #01388339</p>	<p>Dave Tanner 209-758-3108 dtanner@prucommercialre.com Lic. #00418278</p>	<p>Ron Roaks 209-758-3147 rroaks@prucommercialre.com Lic. #01263213</p>
--	--	---

www.TheCommercialConnection.com

The information contained herein is from sources deemed reliable, but we make no representations or warranties, express or implied, as to the accuracy of the information. Buyer must verify the information and bear all risk for any inaccuracies. Package is subject to sale, lease, price change or withdrawal. 9/9/10

