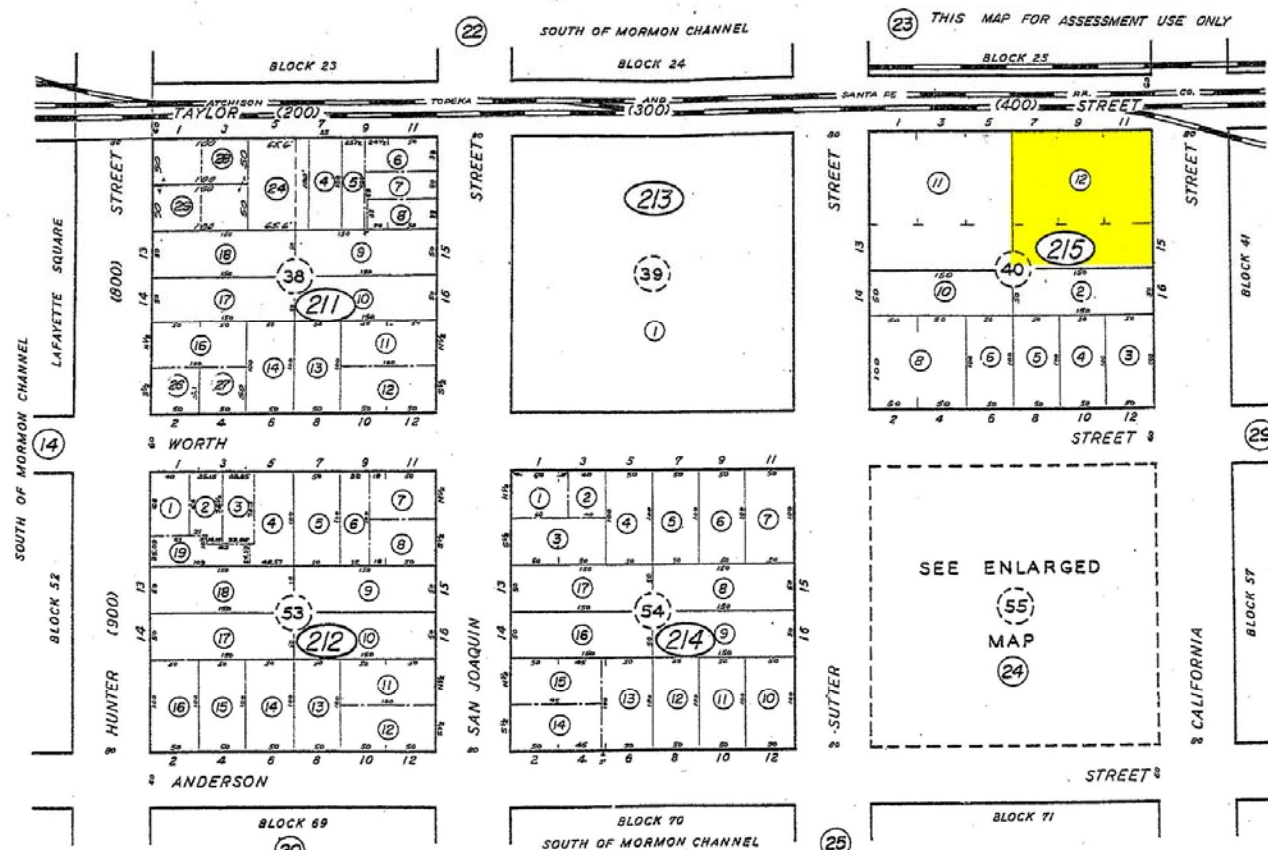


147-21



NOTE: Original dimensions are Stockton City Standard - By U.S. Standard, lots average 50.50' X 101' and 50.50' X 101.50'

**SOUTH OF MORMON CHANNEL**

BLOCKS 38-39-40-53-54  
 SCALE 1"=100'  
 SAN JOAQUIN COUNTY  
 ASSESSOR'S MAPS

OCT 18 1997  
 SOUTH OF MORMON CHANNEL  
 BLOCKS 38-39-40-53-54

**801 S. California Street, Stockton, CA**



**Commercial Real Estate**

**Tony Suleiman** 209-758-3467 [tsuleiman@prucommercialre.com](mailto:tsuleiman@prucommercialre.com)  
**Dave Tanner** 209-758-3108 [dtanner@prucommercialre.com](mailto:dtanner@prucommercialre.com)  
**Ron Roaks** 209-758-3147 [rroaks@prucommercialre.com](mailto:rroaks@prucommercialre.com)

[www.TheCommercialConnection.com](http://www.TheCommercialConnection.com)