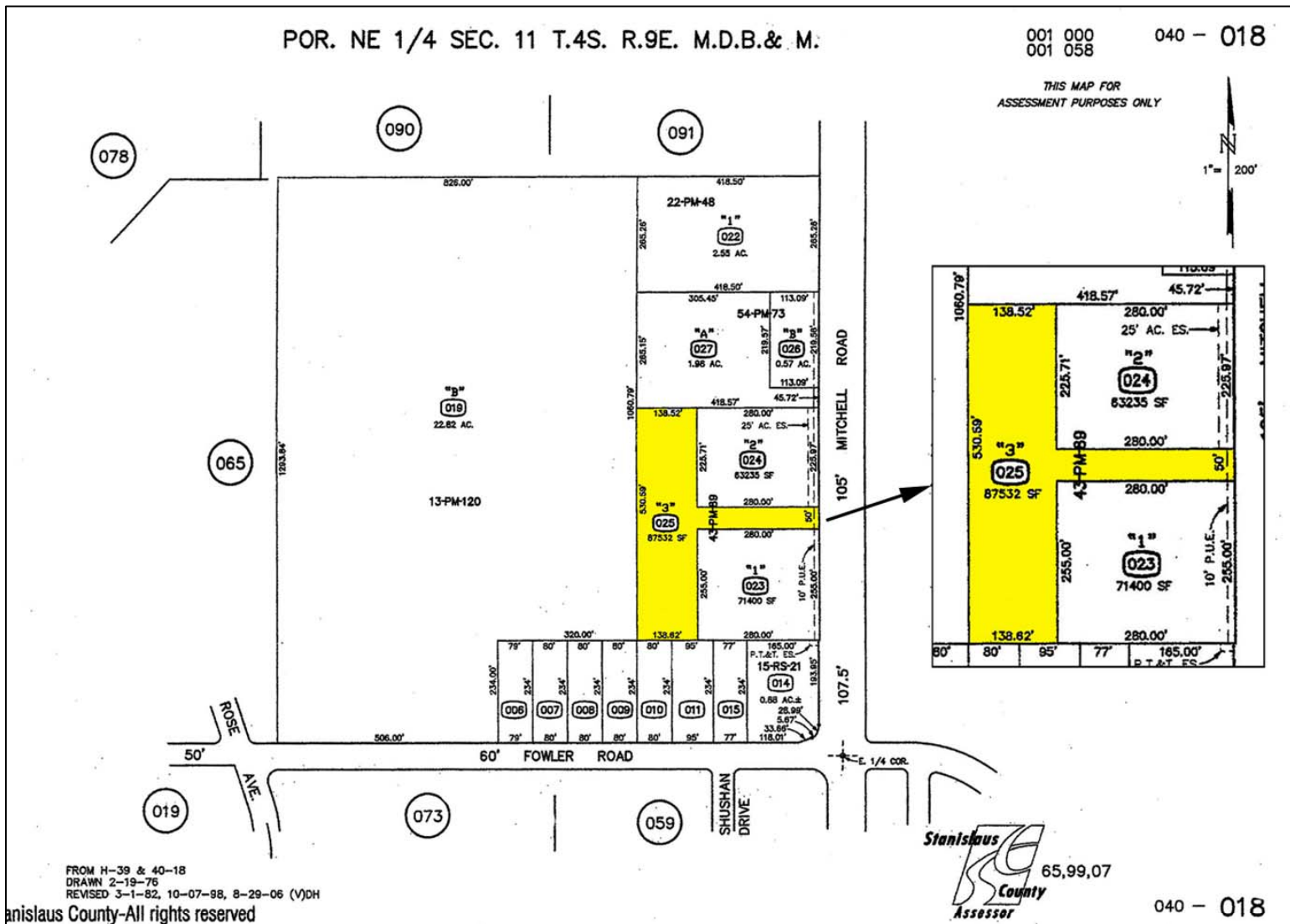


POR. NE 1/4 SEC. 11 T.4S. R.9E. M.D.B.& M.

001 000
001 058

040 - 018

THIS MAP FOR
ASSESSMENT PURPOSES ONLY



1775 Mitchell Road,
Ceres, CA
Developable Lot
Parcel Map

FROM H-39 & 40-18
DRAWN 2-19-76
REVISED 3-1-82, 10-07-88, 8-29-06 (V)DH

Stanislaus County-All rights reserved



040 - 018



Tony Suleiman 209-758-3467 tsuleiman@prucommercialre.com Lic. #01388339	Dave Tanner 209-758-3108 dtanner@prucommercialre.com Lic. #00418278	Ron Roaks 209-758-3147 rroaks@prucommercialre.com Lic. #01263213
---	---	--

www.TheCommercialConnection.com